

**IP Network PA System  
Mobile Terminal  
Operation Manual**

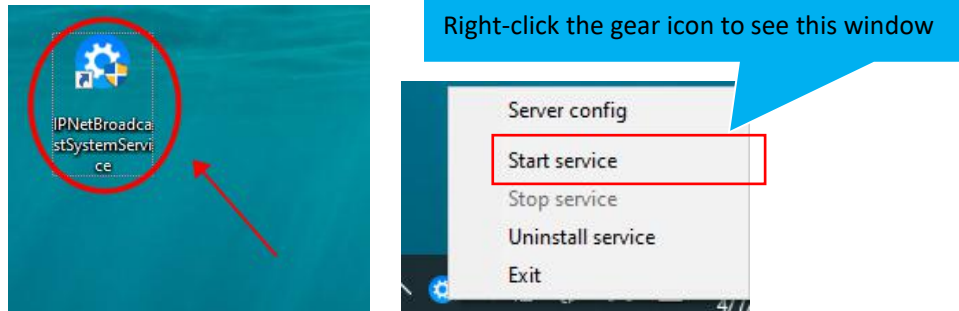
# Content

1. Server Login.....	- 3 -
1.1. Confirm that IP network PA system is activated.....	- 3 -
1.2. Sever login by web.....	- 3 -
2. Use of IP Digital Broadcast Mobile Terminal.....	- 4 -
2.1. Mobile login.....	- 4 -
2.2. Terminal state.....	- 5 -
2.3. Studio function.....	- 8 -
2.4. Session state.....	- 11 -
2.5. Broadcast room.....	- 13 -
2.5.1. Speech broadcast.....	- 13 -
2.5.2. Text broadcast.....	- 14 -
2.6. Media library.....	- 19 -
2.7. Sidebar.....	- 20 -
2.7.1. Text recognition setting.....	- 21 -
2.7.2. Personalized skinning.....	- 22 -
2.7.3. Multi-language.....	- 23 -
2.7.4. About.....	- 24 -
2.7.5. Setting.....	- 26 -

# 1. Server Login

## 1.1. Confirm that IP network PA system is activated

Open the system background server, and right-click on the lower right to confirm that it is started.

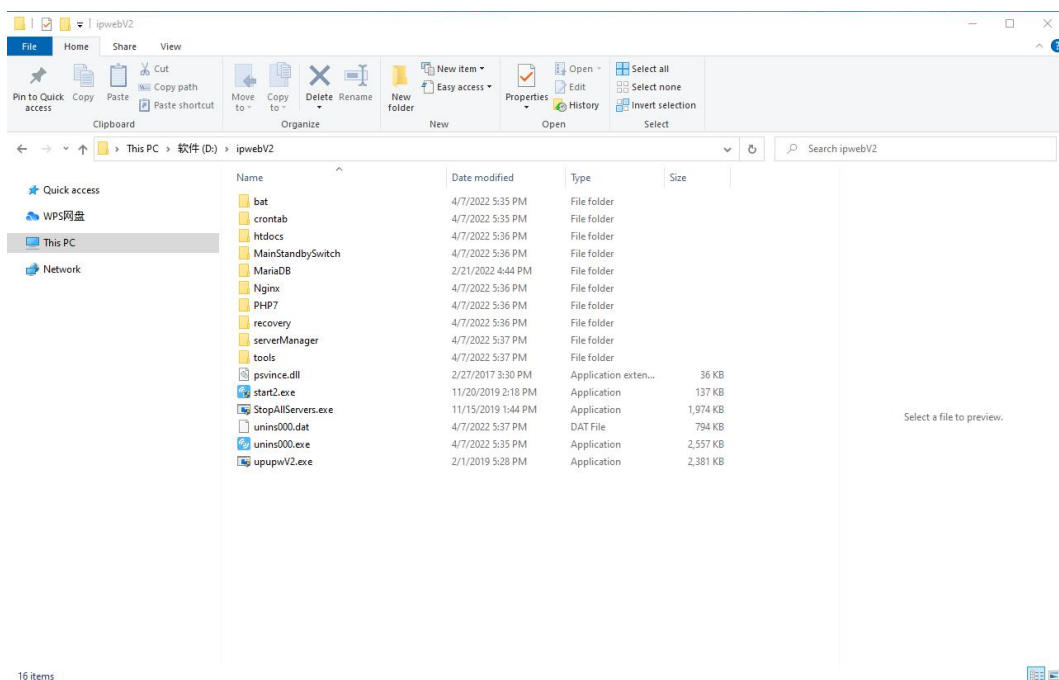


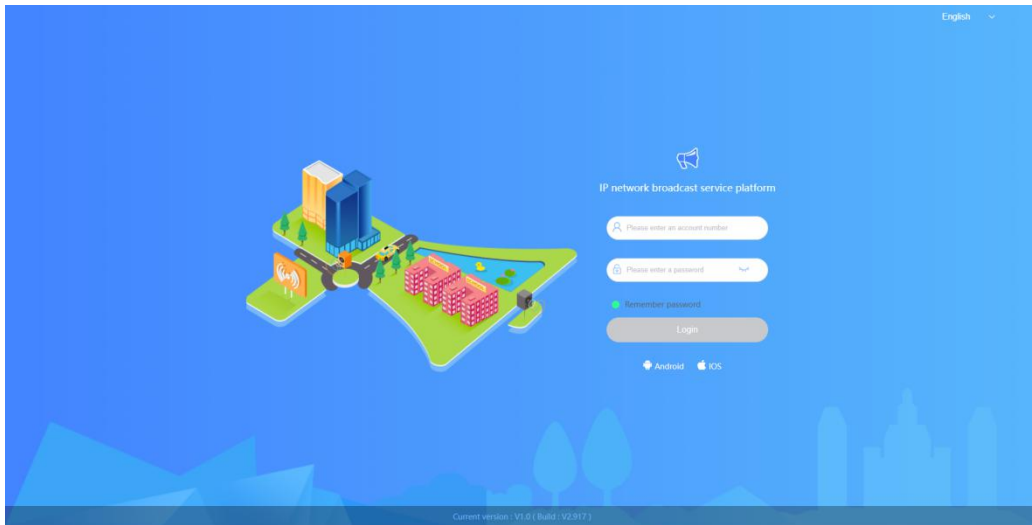
## 1.2. Server login by web

Open Google Chrome (recommended), enter the IP address of the server 172.16.11.176: 81 (login with the address actually set on site + port 81).



If the webpage cannot be opened normally, open the startup program as administrator on the D drive, and it will automatically jump to the login webpage after it is started.





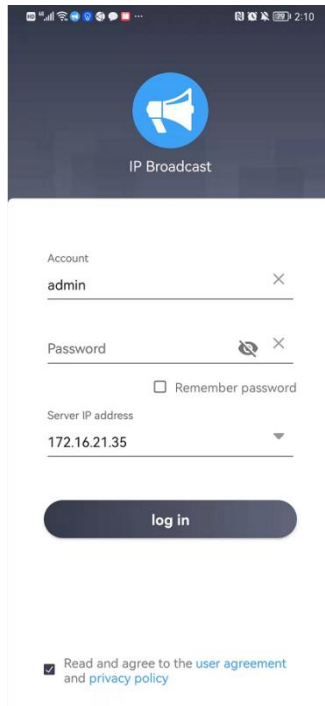
Enter the account admin and password 123456.

## 2. Use of IP Digital Broadcast Mobile Terminal

After the normal debugging of the web and server is completed, the IP digital broadcast mobile terminal can be used normally. **Therefore, when the IP digital broadcast mobile terminal is abnormal, first make sure that the server can be used normally and the communication between the mobile phone and server is normal!**

### 2.1. Mobile login

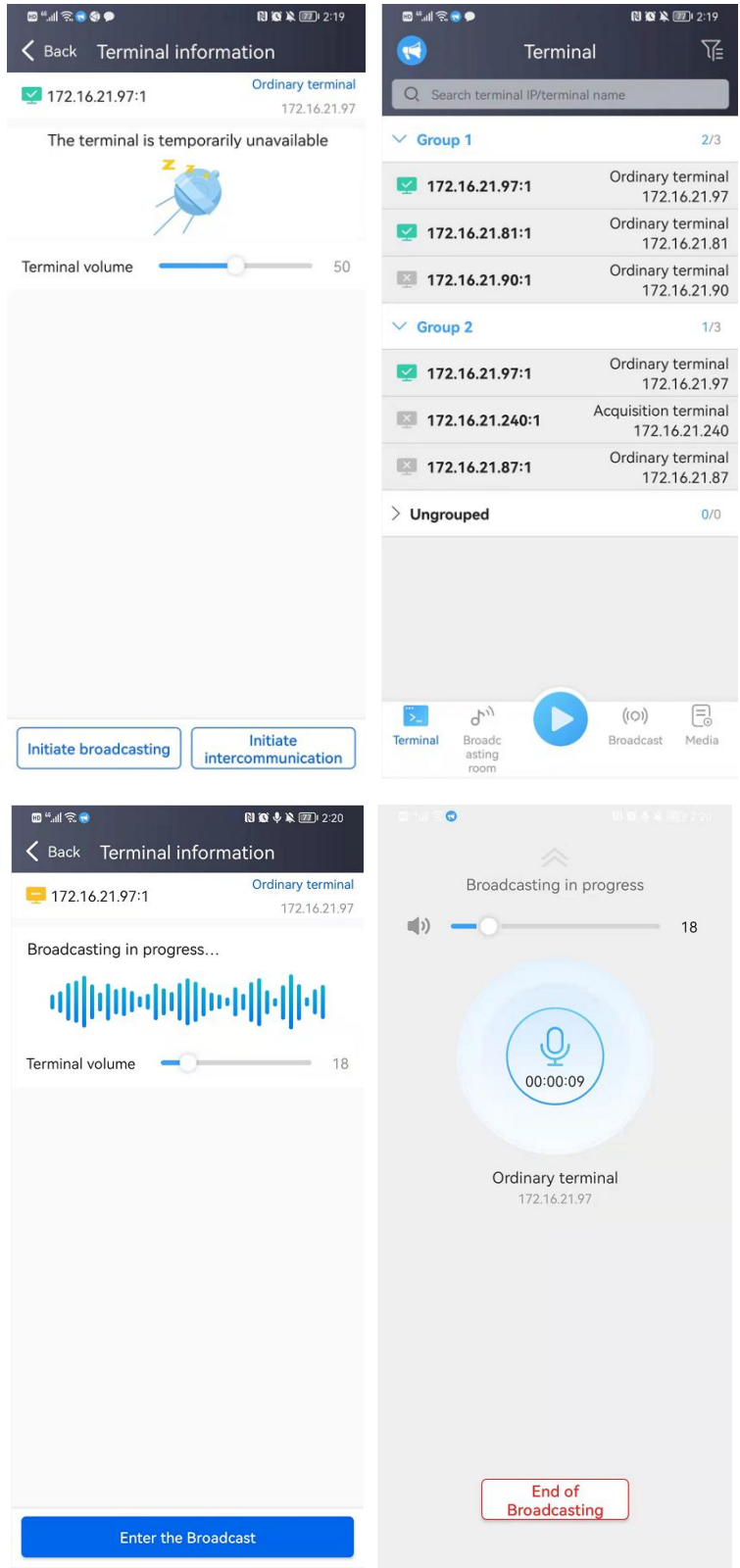
Fill in the account admin, password 123456, and server IP (fixed IP address of the server).



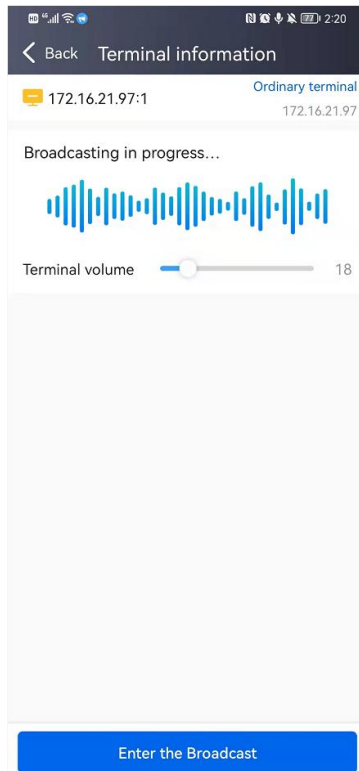
Note: The mobile terminal needs to be registered in the web background to log in normally.

## 2.2. Terminal state

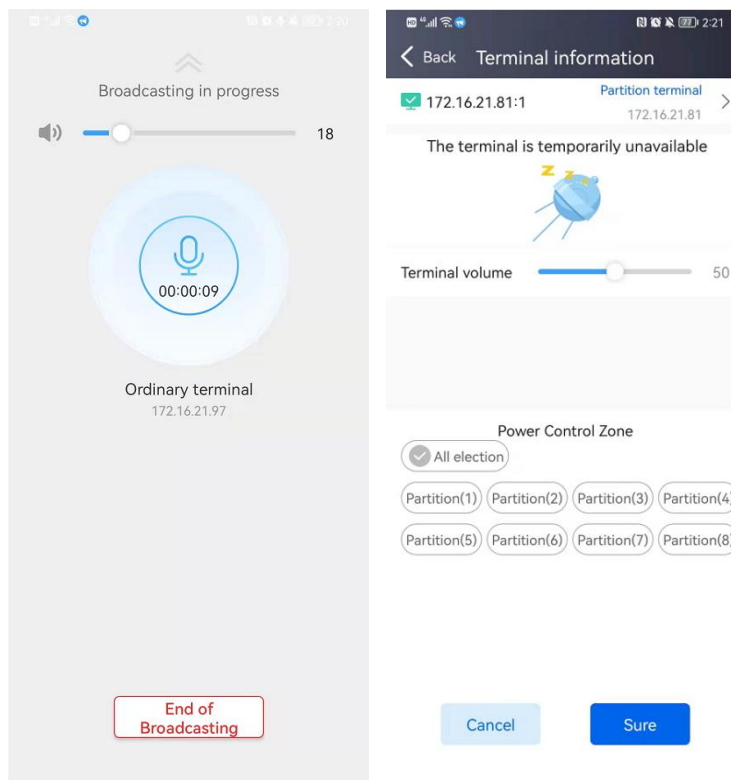
You can manage the status of terminals under the current login user authority by group. Click the icon in the upper right corner to filter and view terminals by terminal status, and click a terminal to view the current status information of the corresponding terminal.



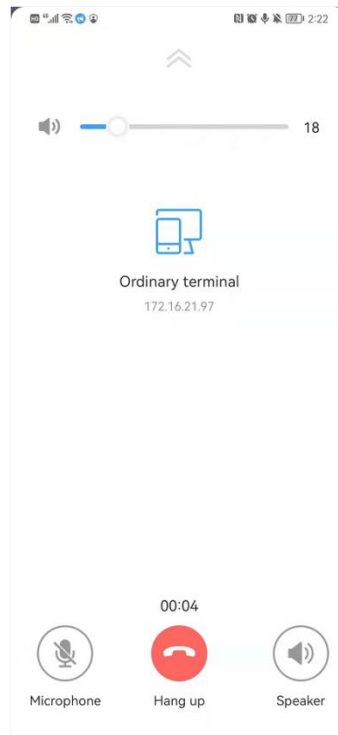
If the terminal is currently performing a broadcast/intercom task, the terminal information interface displays the "Enter Broadcast"/"Enter Intercom" button, click to enter the current broadcast/intercom interface.



1. Initiate/end one-to-one broadcast: select the terminal that needs to be broadcast on the terminal status interface, click the terminal to enter the terminal information interface, and click the "Broadcast" button to enter the broadcast interface. (Note: When the broadcast terminal is partition terminal, it is necessary to configure the power partition to initiate the broadcast) Click to broadcast.

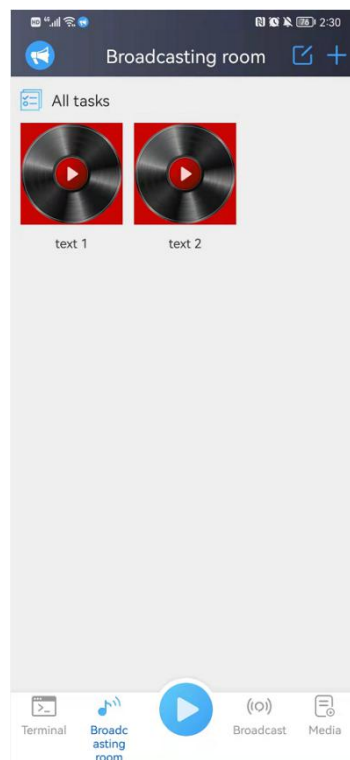


2. Initiate/end one-to-one intercom: select the terminal that needs to be intercom in the terminal status interface, click the terminal to enter the terminal information interface, and click the "Intercom" button to enter the intercom interface.



### 2.3. Studio function

The studio is used for users to create music tasks and play them to designated area.

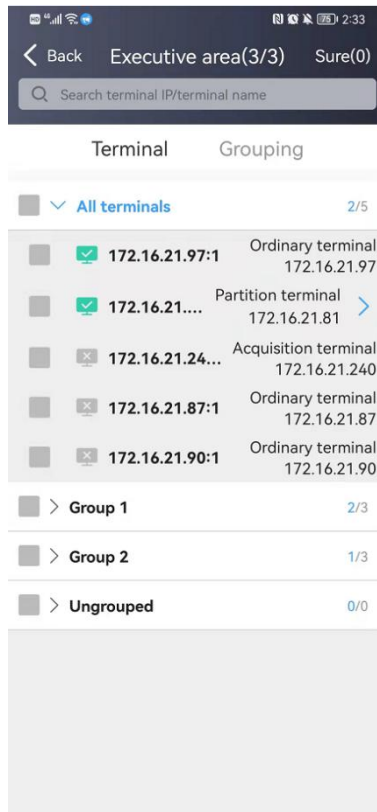
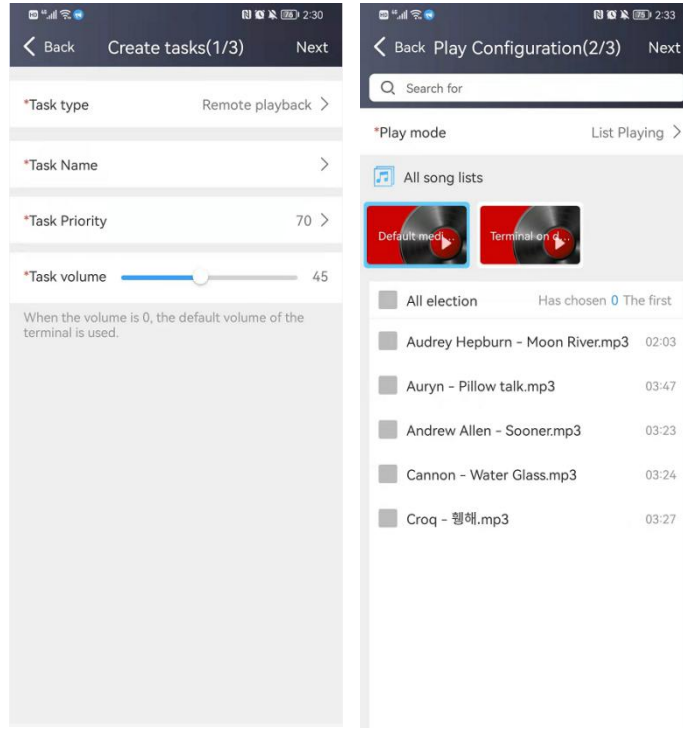


# 1. Create a music task:

Step 1: Configure the task name, playlist priority and task volume

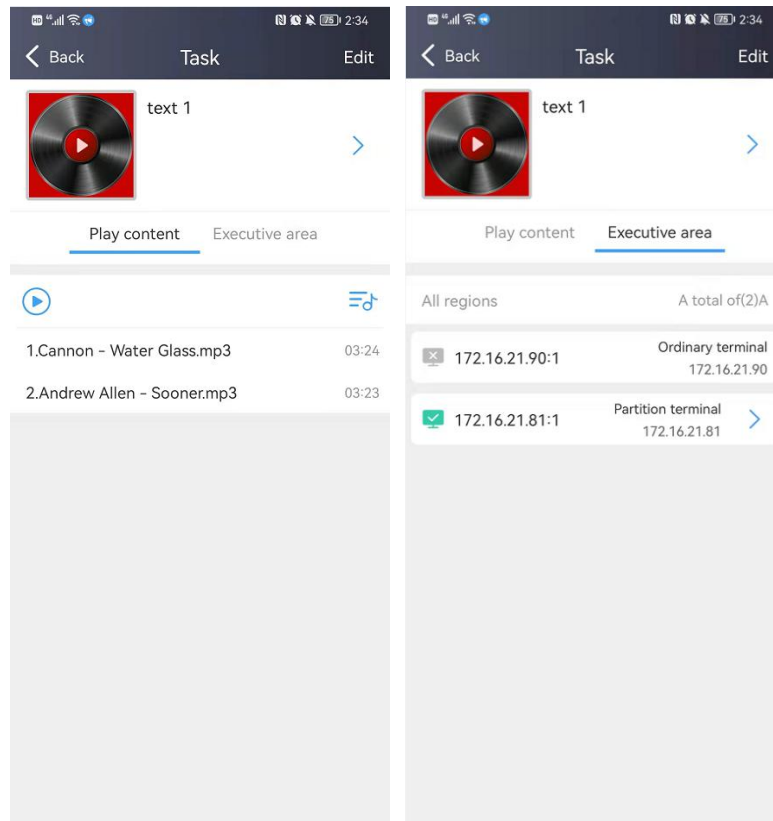
Step 2: Configure the playback mode, select the playback music

Step 3: Select the execution terminal or group and save it



## 2. Music task information viewing and editing

Click on the music task to enter the music details page, where you can edit the task playlist, execution area and task information.



## 3. Play/stop music task

Enter the task interface and click the "Play" button or directly tap and hold on the song to start playing;

After starting to play, you can click the "Pause" button to pause/resume the playback, and click the "Stop" button to end the task.

Task Edit

text 1

Play content Executive area

1.Cannon - Water Glass.mp3 03:24

2.Andrew Allen - Sooner.mp3 03:23

Task Edit

text 1

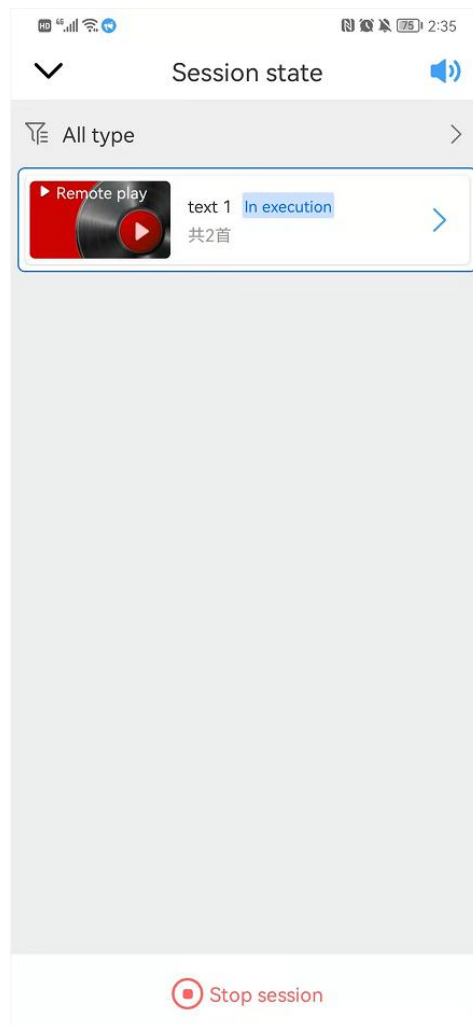
Play content Executive area

1.Cannon - Water Glass.mp3 03:24

2.Andrew Allen - Sooner.mp3 03:23

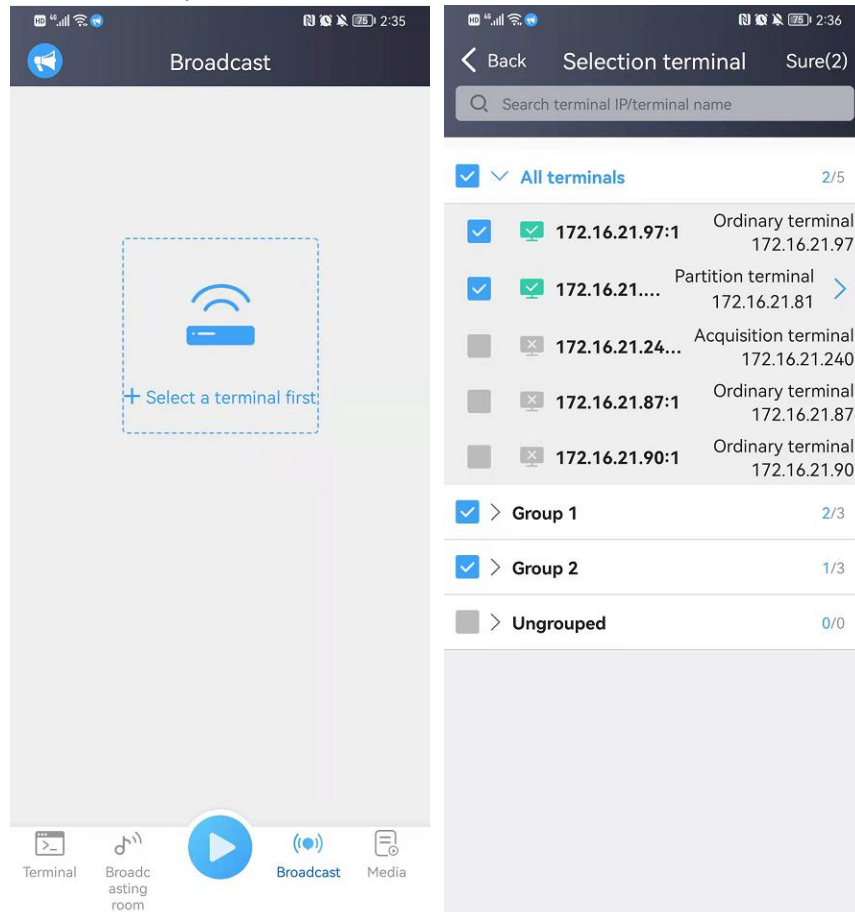
## 2.4. Session state

The session state is used to manage the current playback task, and you can adjust the task volume, end the task, pause the task (play music), resume the playback task (play music), switch the playback mode (play music), and switch the task type display.



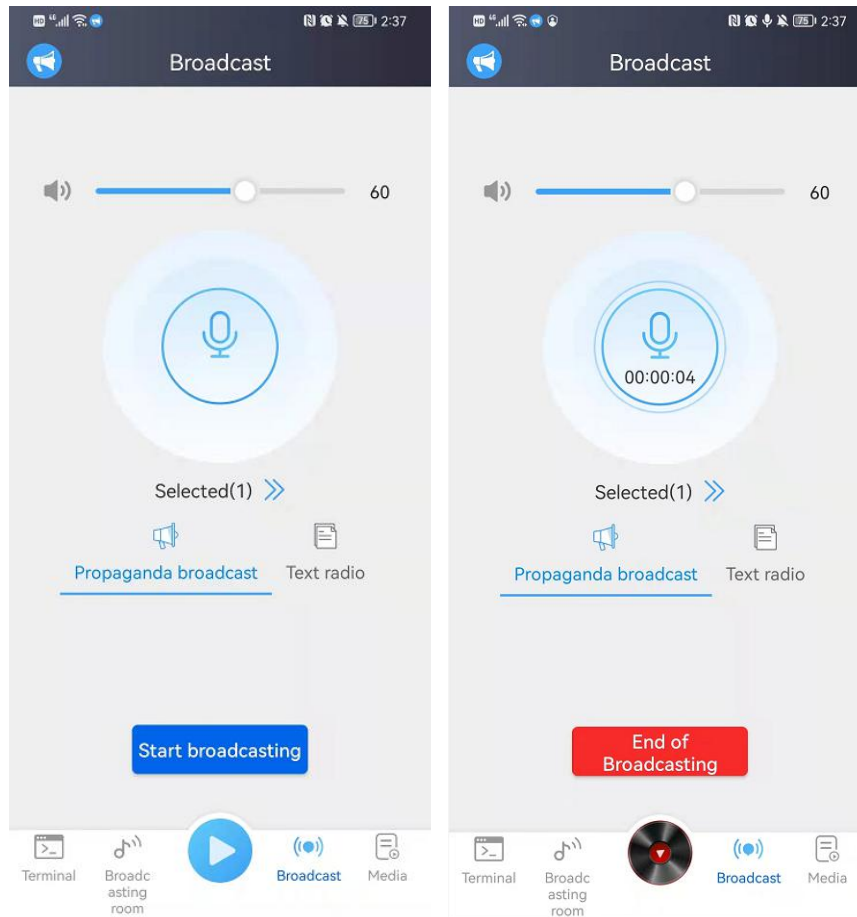
## 2.5. Broadcast room

Broadcast room is used to initiate broadcast tasks: enter the broadcast interface and select the broadcast terminal, and then select the broadcast type (speech broadcast/text broadcast).



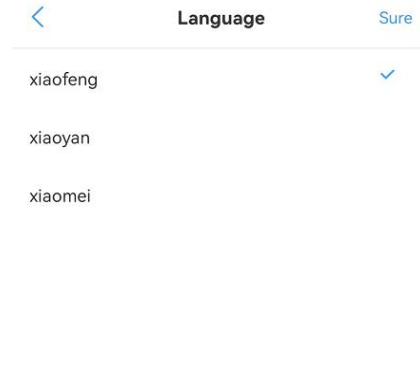
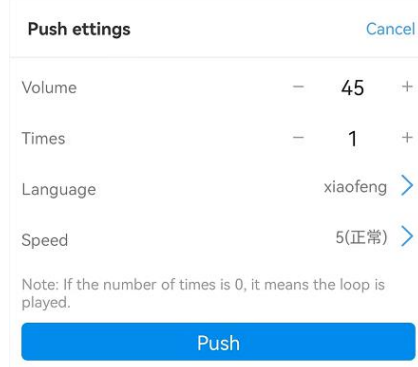
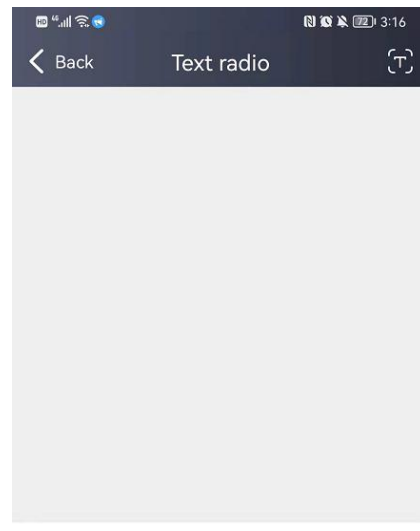
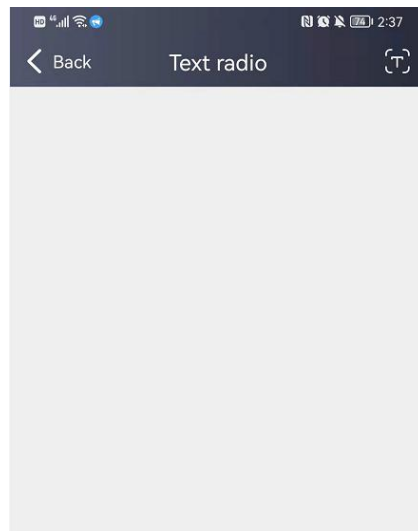
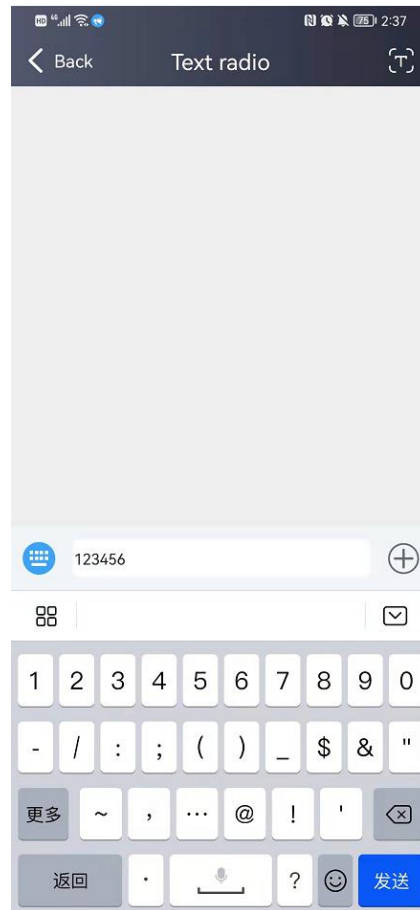
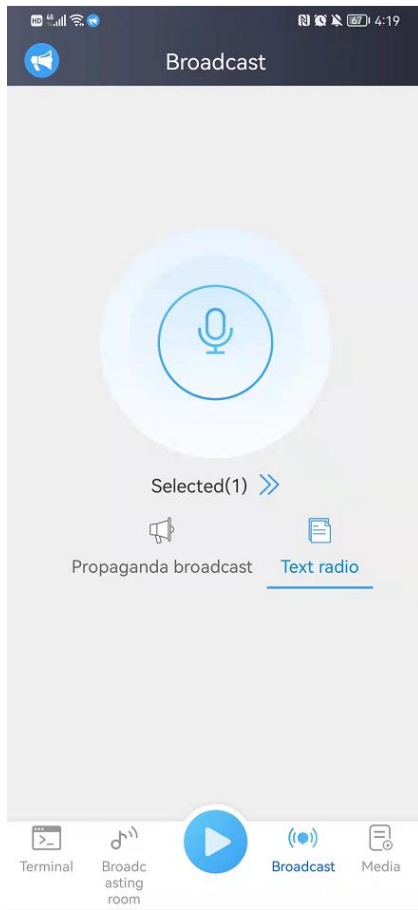
### 2.5.1. Speech broadcast

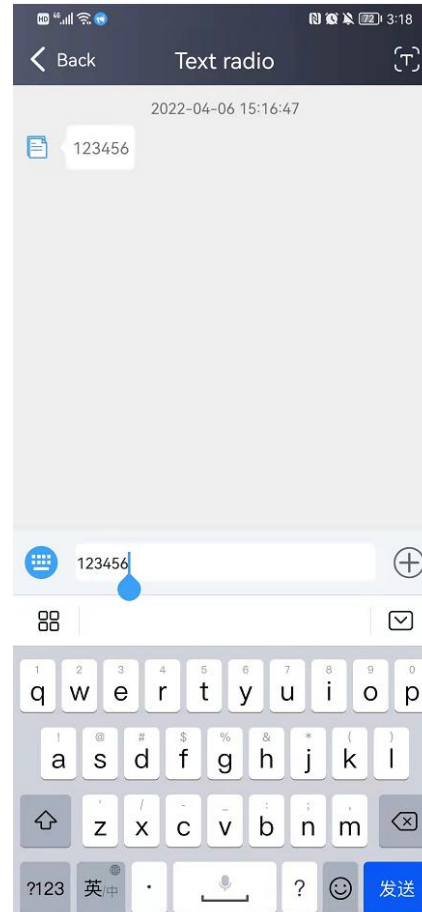
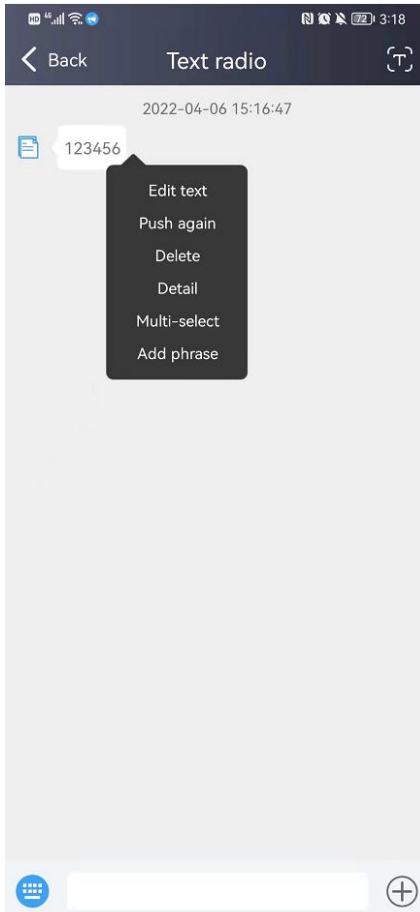
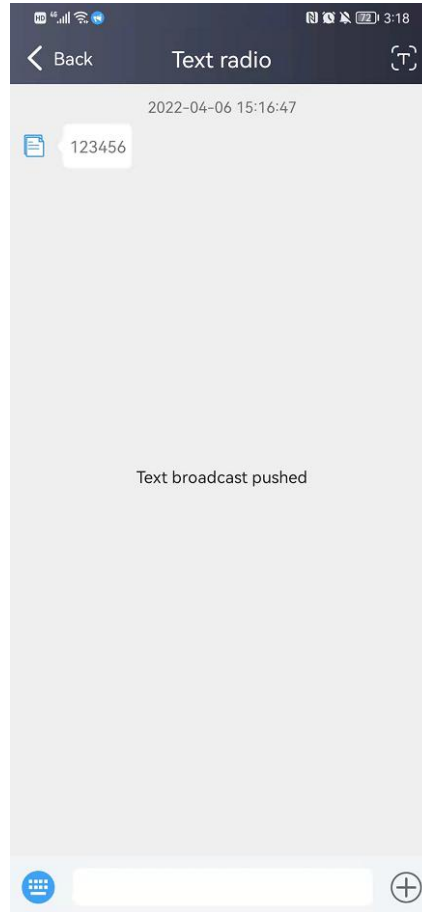
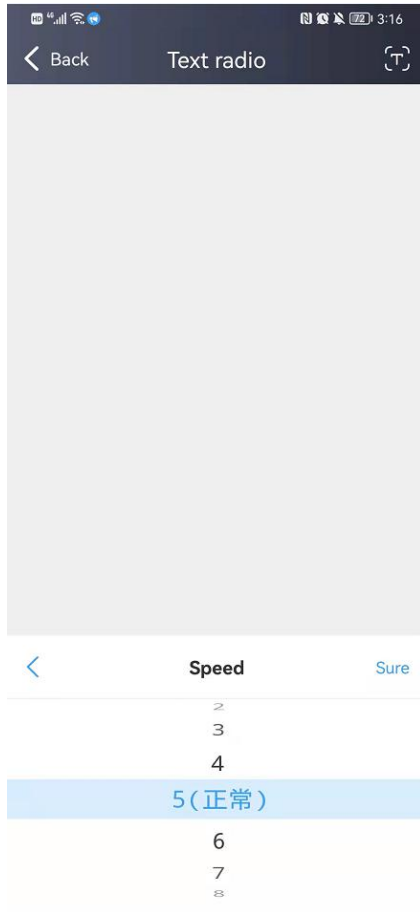
1. Select the speech broadcast and click "Start Broadcast" to speak;
2. Click "End Broadcast" to end the speech.

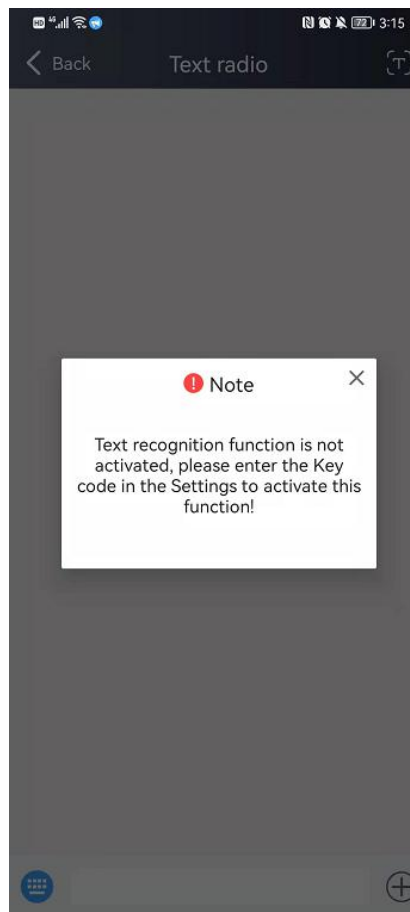
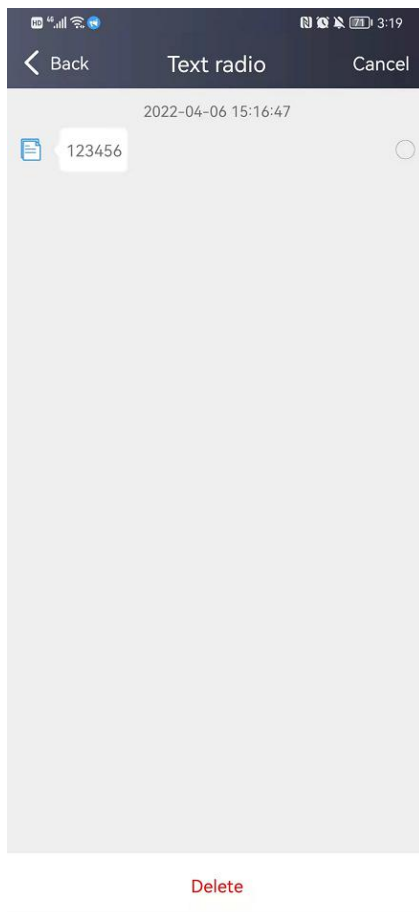
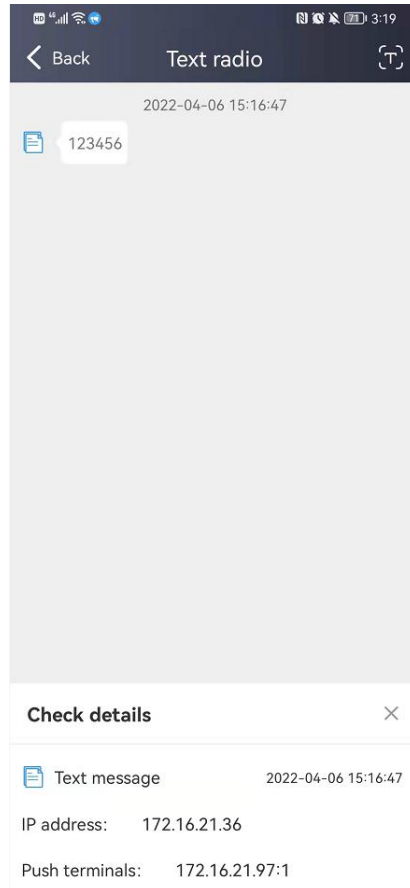
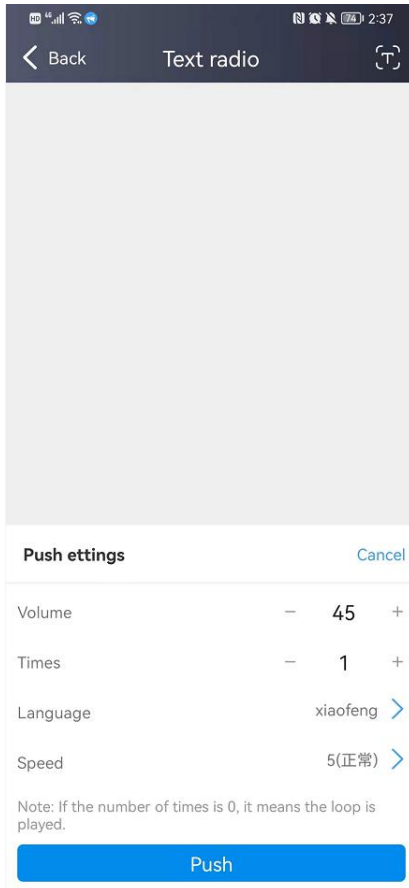


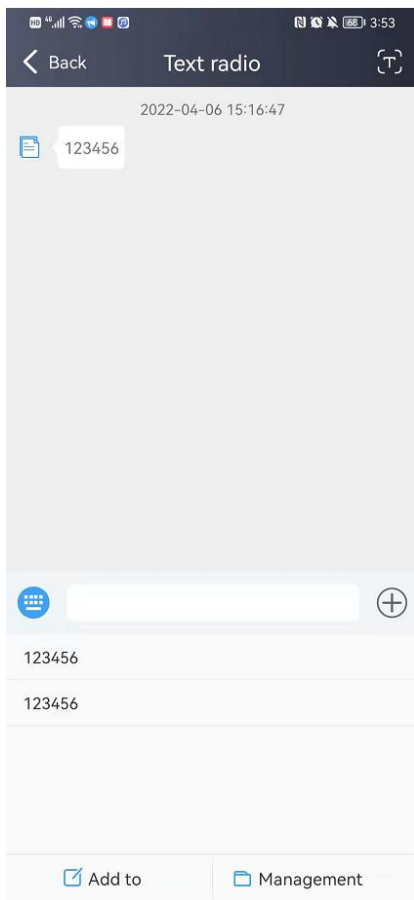
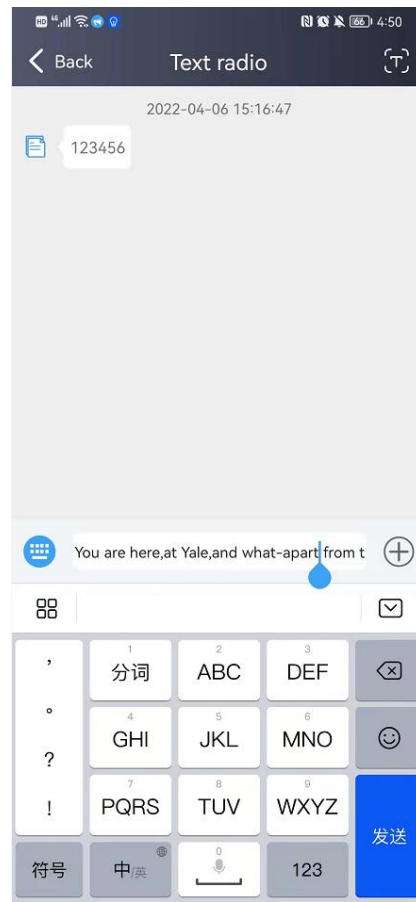
## 2.5.2. Text broadcast

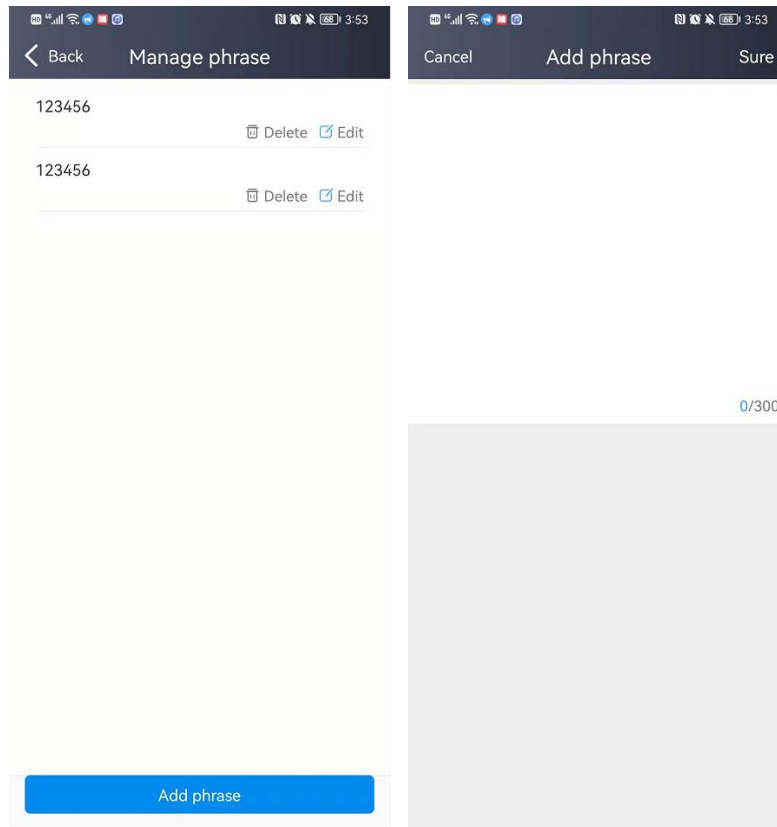
1. Select text broadcast to enter the text broadcast interface;
2. Enter text in the input box and click "Send";
3. The "Push Setting" window will pop up (you can customize the required data), click push (there will be a prompt after the push is successful);
4. The interface will display the pushed text, tap and hold on the text, and the menu will appear;
5. Click "Edit Text", the text will be displayed in the text box and can be edited;
6. Click "Push Again", the "Push Setting" window will pop up, and you can set the corresponding information;
7. Click "Delete" to delete this data;
8. Click "Details" to pop up the "View Details" window;
9. Click "Multiple Selection" to select multiple text information to delete;
10. Click "Add to Common" to add the text to the common words.
11. Click the text recognition button on the text broadcast interface to use the text recognition function (activate this function in advance in the text recognition setting in the sidebar).





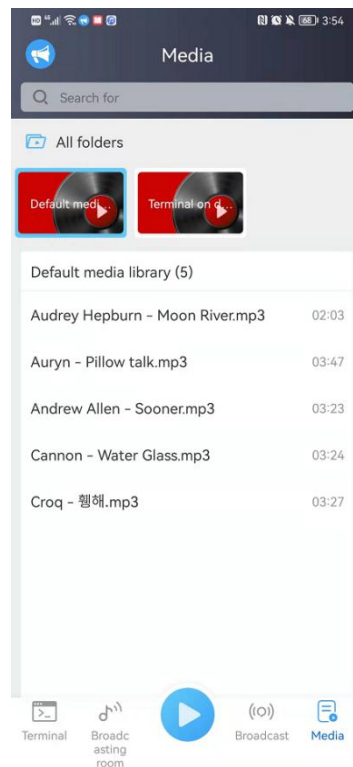




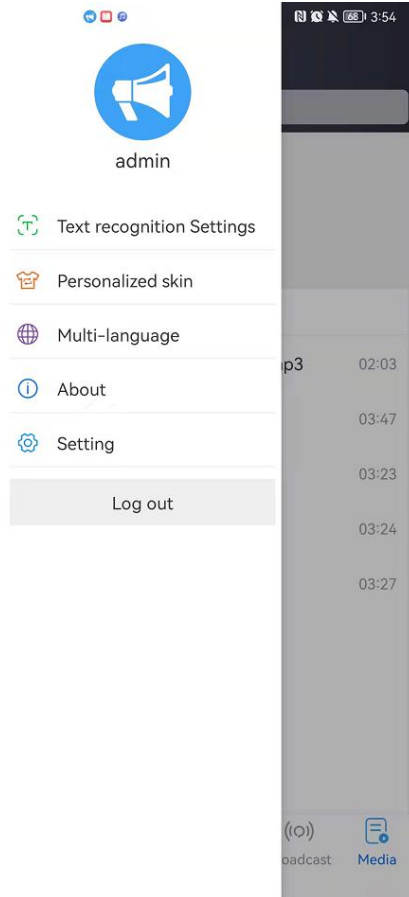


## 2.6. Media library

The media library is used to store media folders and media files.

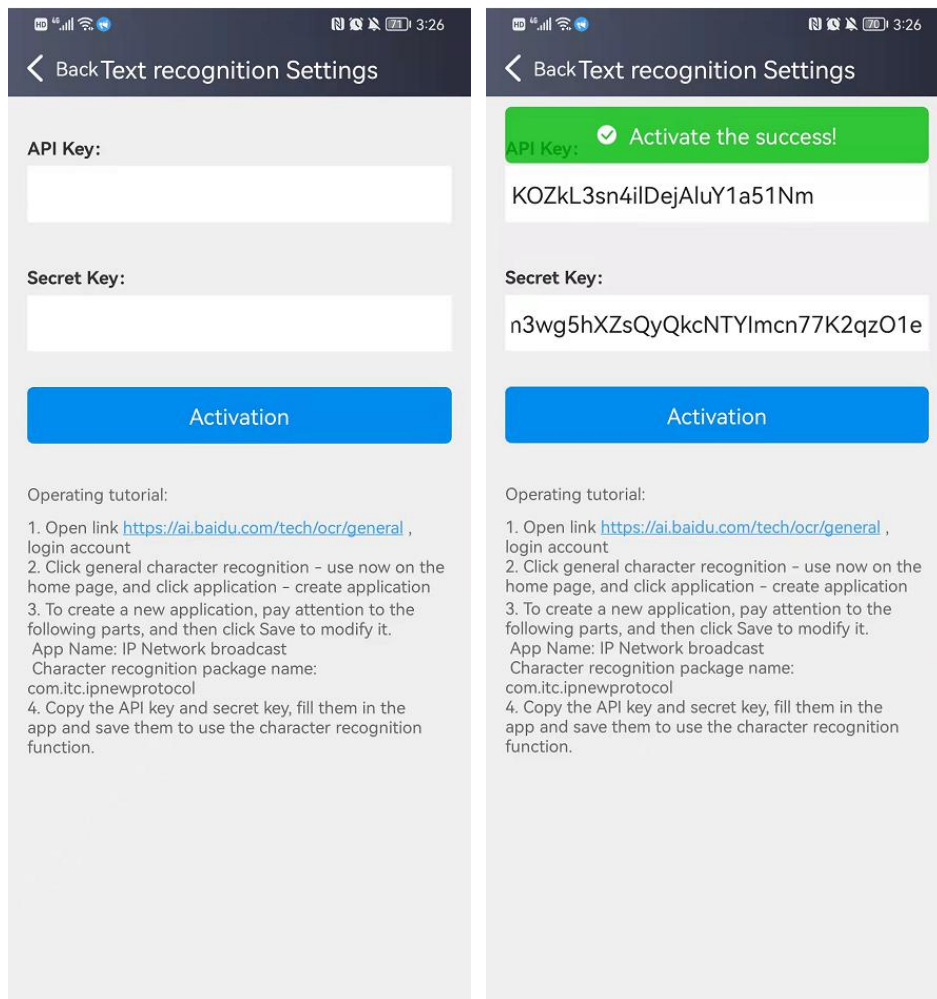


## 2.7. Sidebar



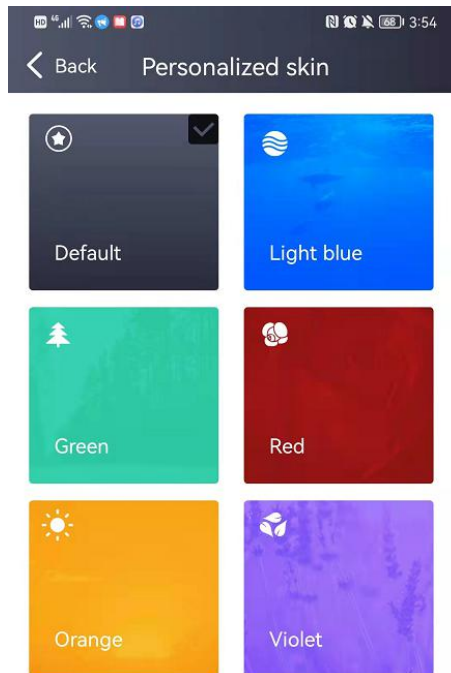
### 2.7.1. Text recognition setting

The text recognition setting is used to activate the text recognition function (only applicable to Chinese and English, other languages are not currently supported).



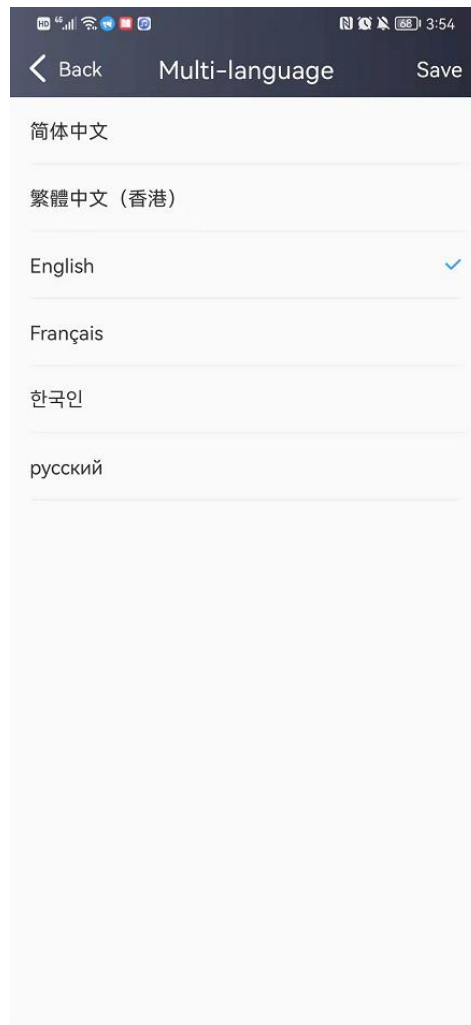
## 2.7.2. Personalized skinning

Personalized skinning is used to customize the interface style of the current user.



### 2.7.3. Multi-language

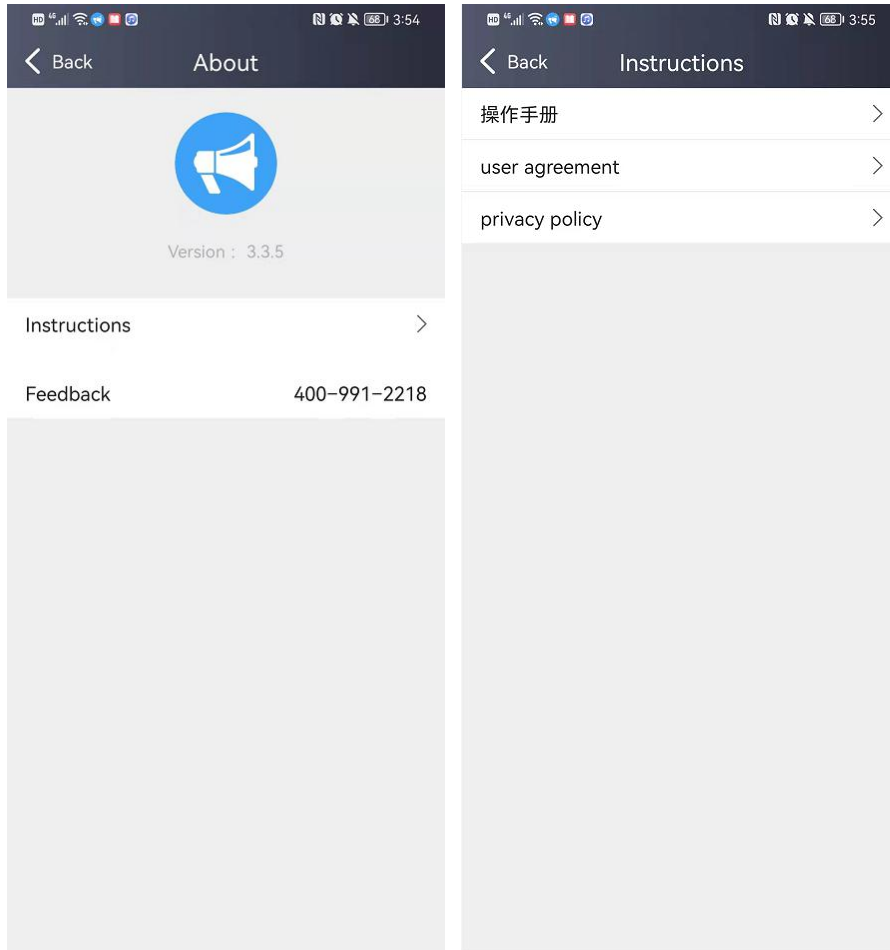
Multi-language is used for the currently logged-in software to switch languages.



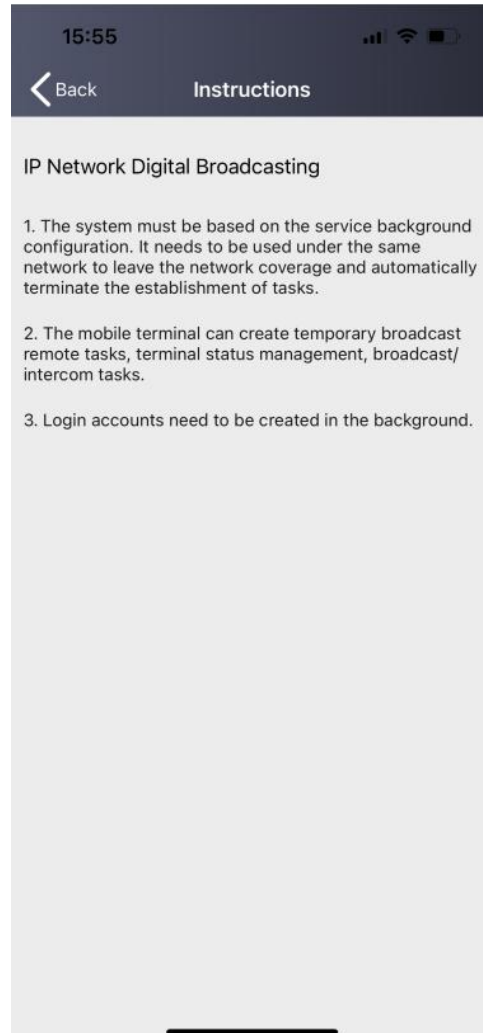
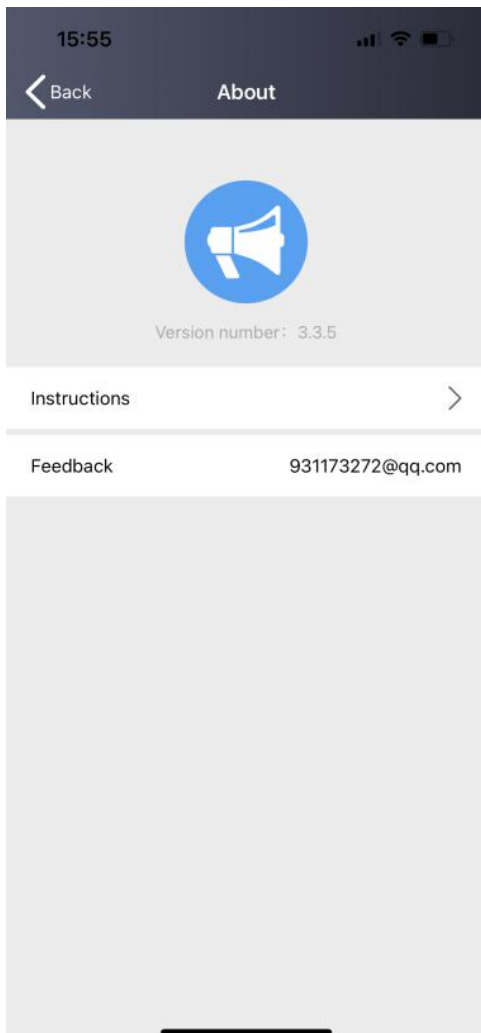
## 2.7.4. About

It is used to view the version number and operation instruction, and provide feedback.

### ① Android:



② iOS:



### 2.7.5. Setting

Setting is used to manage the personal information of the currently logged-in user, including the modification of account, password, and avatar.

